

ROHINI COLOURS B BLOCK

*Discover your Perfect
Home in Every Shade*



PREMIUM 2 BHK APARTMENTS

WORAIYUR, TRICHY

ROHINI HOUSING

since 1987

Rohini Housing is a leading flat promotion company in Trichy, known for crafting quality residential spaces. Founded by Er. M.V. Maruthachalam, whose global experience introduced Apartment culture to the Trichy, the company is now led by Er. M. Anand, a qualified civil and structural engineer. Under his leadership, Rohini Housing continues its legacy of excellence, standing for innovation, sustainability, and unmatched quality — the top choice for homebuyers in the city of Trichy.

OUR EXPERIENCE

Founded in 1987, our legacy blends architectural brilliance with quality construction, offering homes that redefine urban living. We have developed over 1.5 million square feet of prime residential real estate across Trichy, Srirangam & Chennai.

OUR APPROACH

At Rohini Housing, professionalism isn't just a promise — it's our foundation. We prioritize clear communication, transparency, and integrity, ensuring every client's vision is not just met but surpassed. From thoughtful planning and elegant interior and exterior design to flawless plumbing and electrical work, every detail is executed with care by skilled artisans. With Rohini, you don't just get a home, you get a perfectly crafted living space built to stand the test of time.

38 YEARS OF
EXPERTISE

65 SUCCESSFUL
PROJECTS

ROHINI COLOURS

Presenting Rohini Colours where modern living meets vibrant design. Located in Kulumani Main Road, Woraiyur, Trichy, this G+5 residential building offers a colourful blend of comfort and convenience. With 5 floors of 4 dwelling units each, you can pick the perfect fit for you and your family.

SPECIAL FEATURES OF ROHINI COLOURS



No Deviation
from Approval Plan



CCTV in all
common areas



High speed automatic Lift
with Auto Rescue Device



Rain water
harvesting



Overall landscaping
with flowering trees
and decorative plants



Generator for lift ,
Common areas and
1 KVA for each flat



Free covered two
wheeler parking



Thoughtfully designed 2 BHK
Premium Apartments



Construction lock
for every flat



Toilet in common area



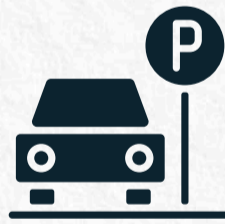
Pest control Treatment



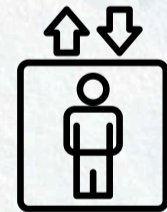
L.E.D Lights in all flats



Spacious corridors
and stairs



Covered Car
parking



Lift Access till
Terrace Floor

APPROVAL DETAILS

BUILDING LICENSE NO. : 086/BL/2023/01090 dated 05.07.2023

PLANING PERMIT NO. : SWP/ BPA/ 004955/2022 dated 18/05/2023

TN RERA REG.NO. : TN/16/BUILDING/0001/2024/ dated 03/01/2024
website : www.rera.tn.gov.in

TYPICAL FLOOR PLAN

*NOT TO SCALE

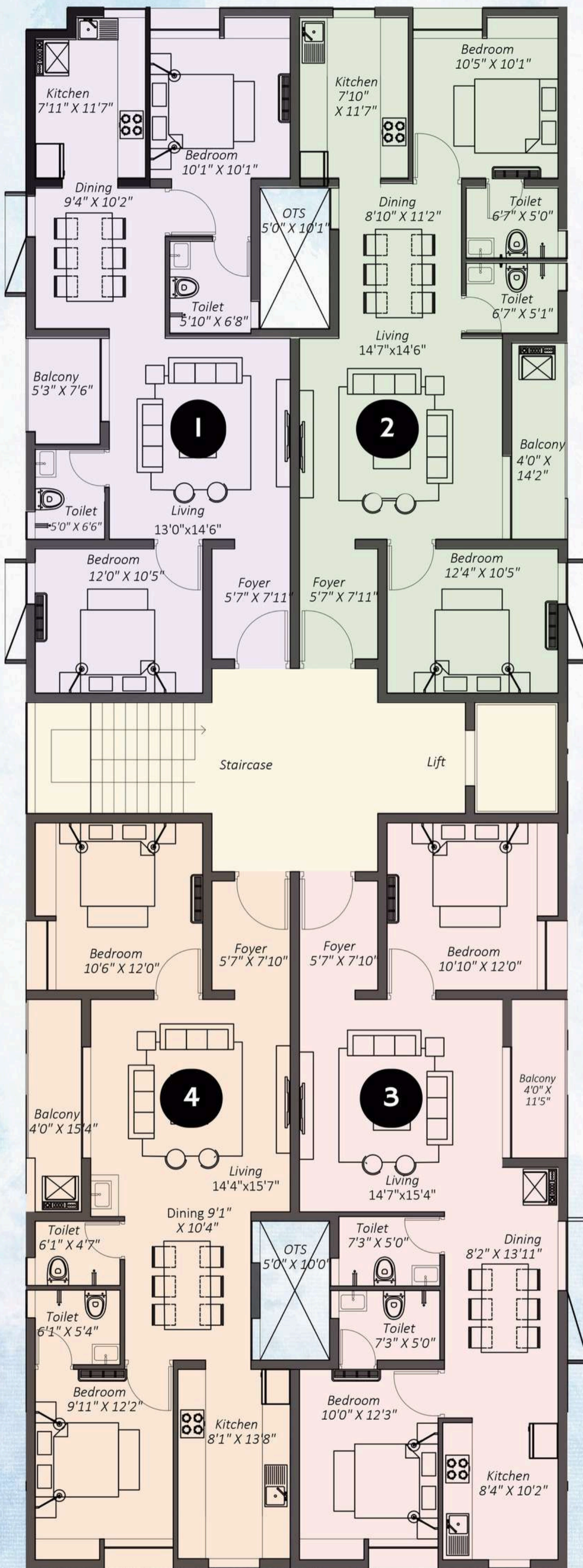
- G + 5 FLOORS
- 4 UNITS/FLOOR
- PREMIUM 2 BHK

**UNIT - 1
1002 sq.ft**

**UNIT - 2
1021 sq.ft**

**UNIT - 4
1089 sq.ft**

**UNIT - 3
1104 sq.ft**

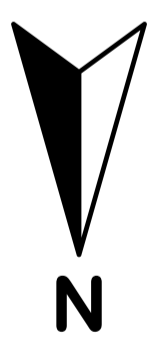
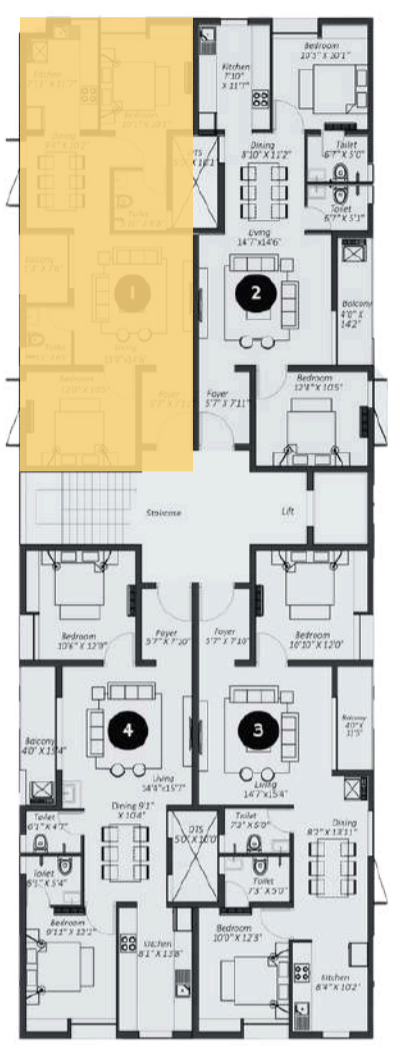
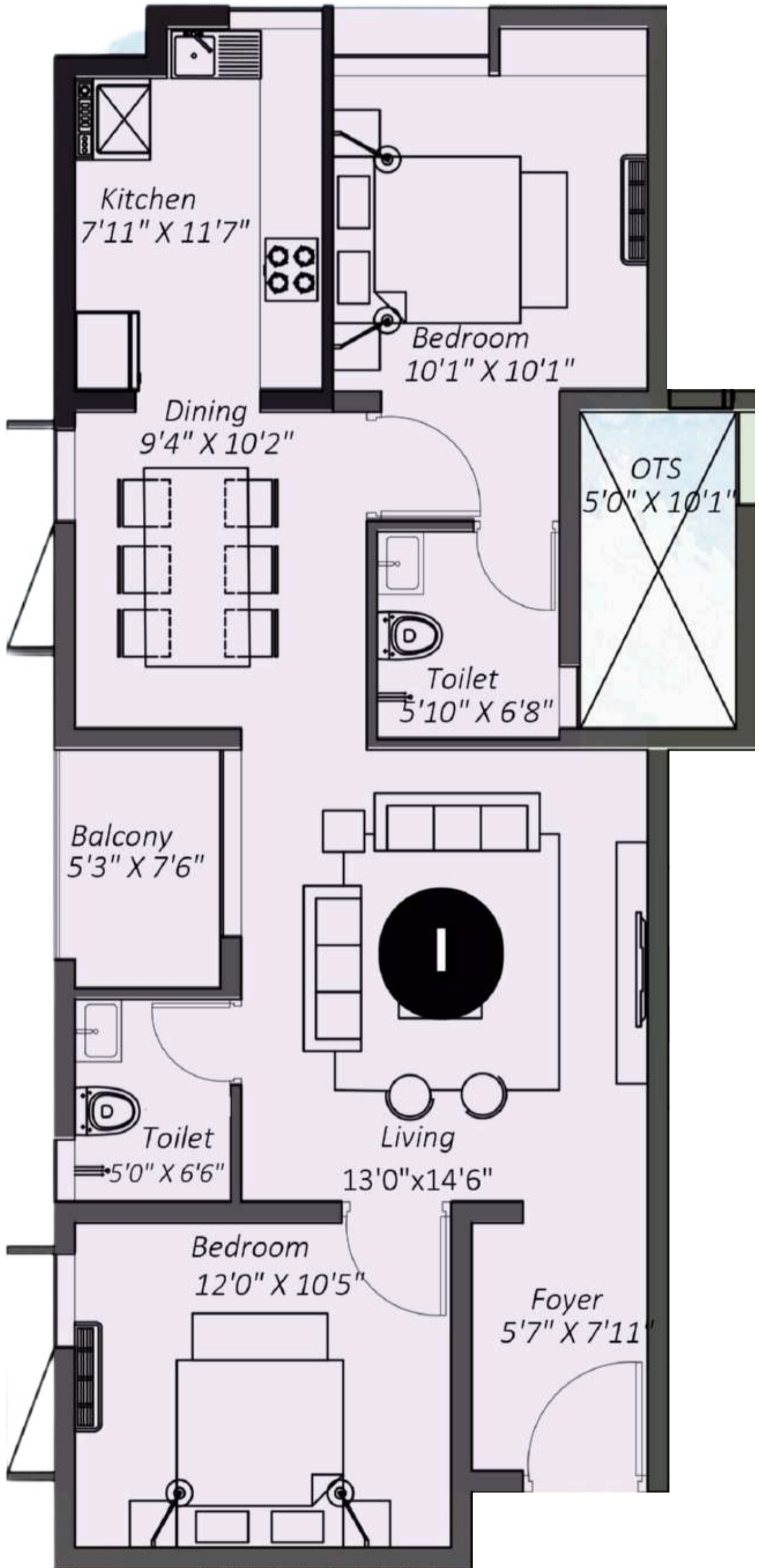


KULUMANI MAIN ROAD



UNIT 1 - 1002 sq.ft

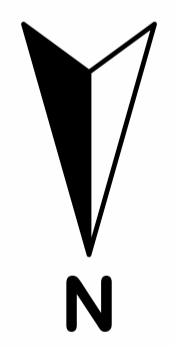
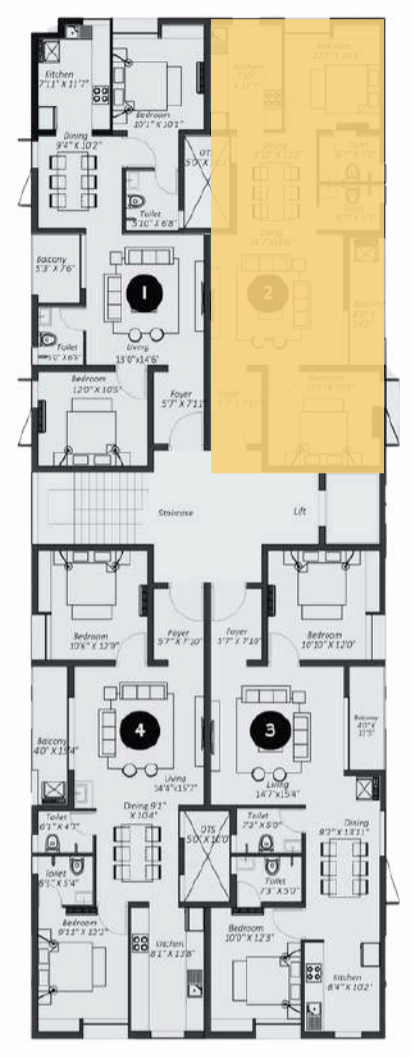
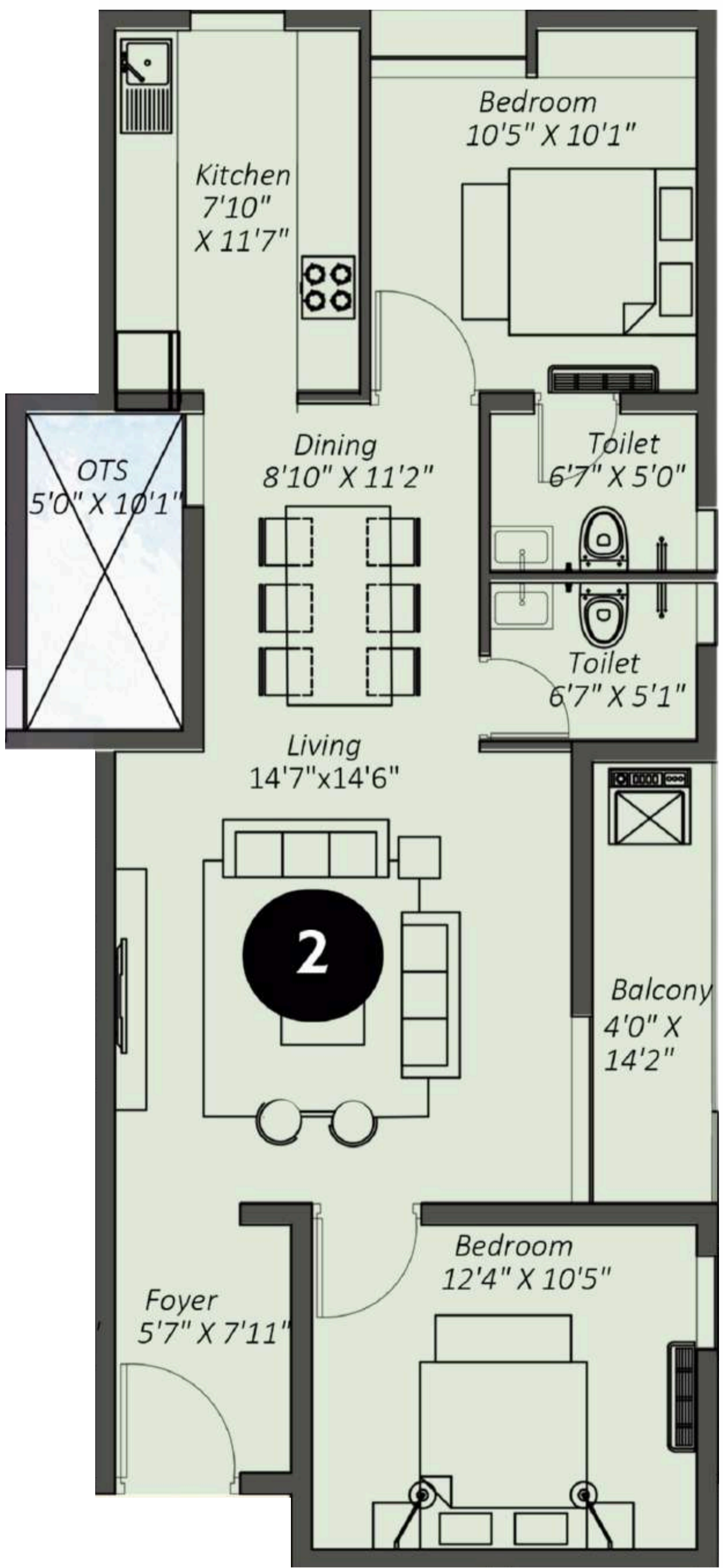
FLAT NUMBERS : 101,201,301,401,501



CONTACT 99655 50661, 99655 60661
FOR EXCLUSIVE SITE VISIT

UNIT 2 - 1021 sq.ft

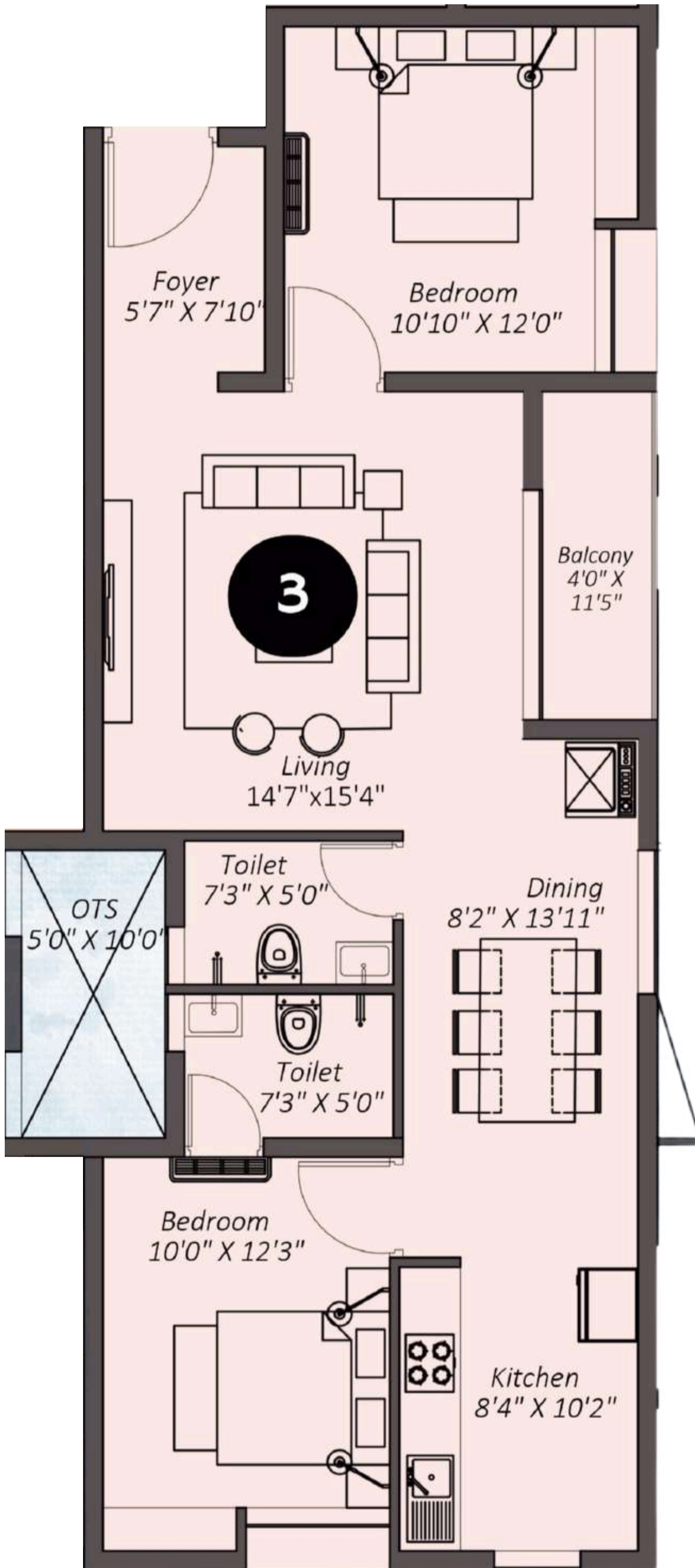
FLAT NUMBERS : 102,202,302,402,502



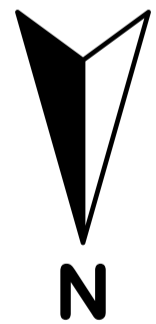
CONTACT 99655 50661, 99655 60661
FOR EXCLUSIVE SITE VISIT

UNIT 3 - 1104 sq.ft

FLAT NUMBERS : 103,203,303,403,503



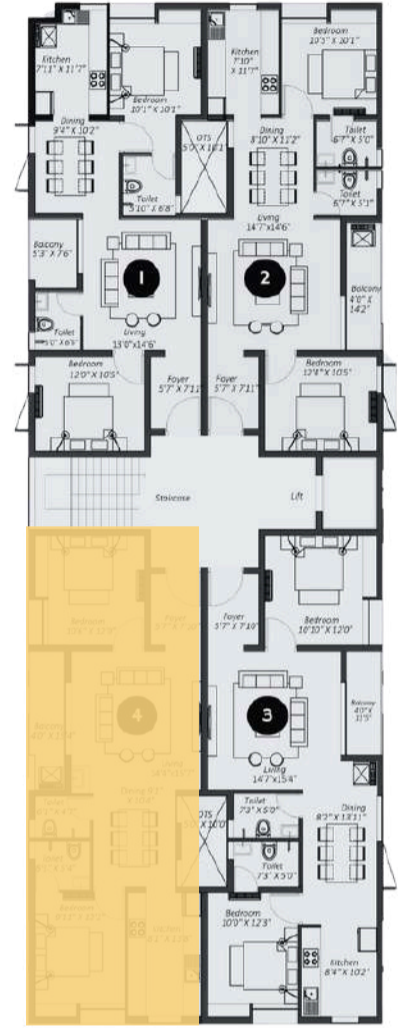
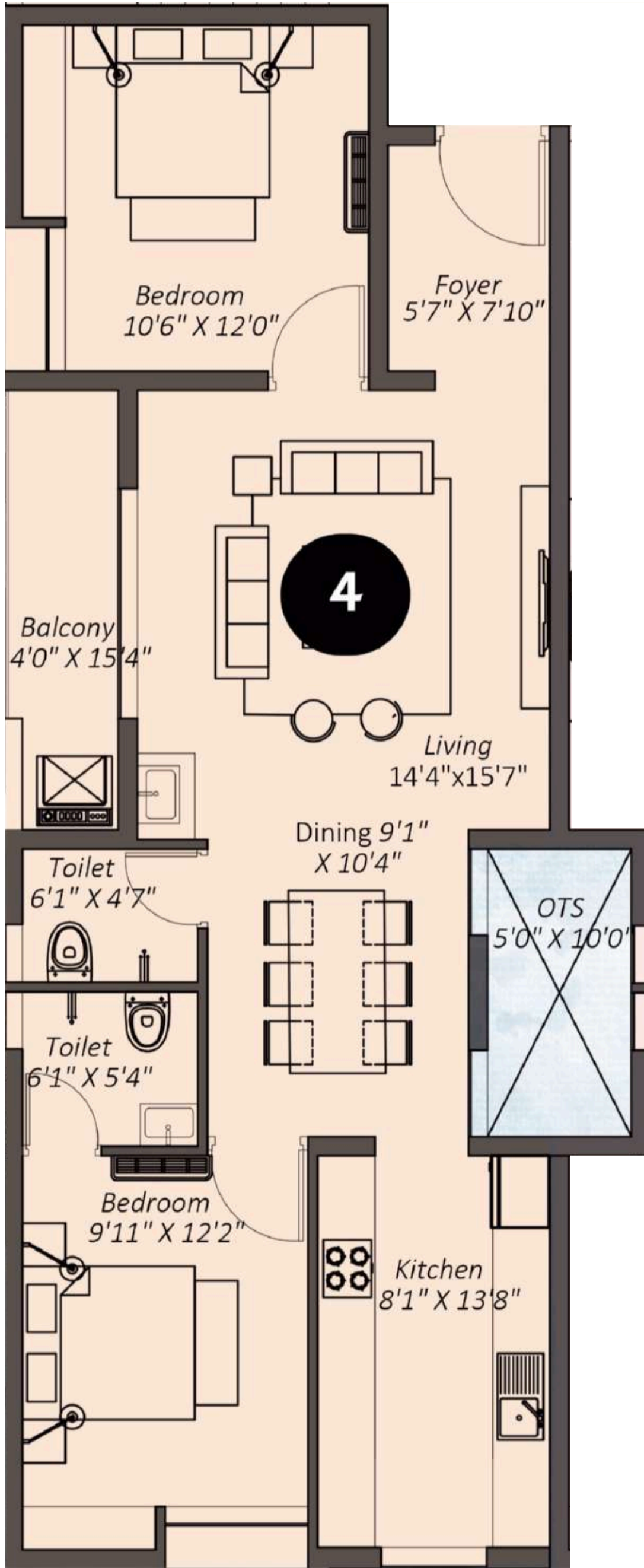
KEY PLAN



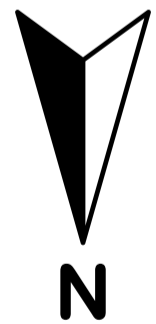
CONTACT 99655 50661, 99655 60661
FOR EXCLUSIVE SITE VISIT

UNIT 4 - 1089 sq.ft

FLAT NUMBERS : 104,204,304,404,504



KEY PLAN



CONTACT 99655 50661, 99655 60661
FOR EXCLUSIVE SITE VISIT

ROHINI COLOURS A BLOCK

**COMPLETED &
FULLY
OCCUPIED**

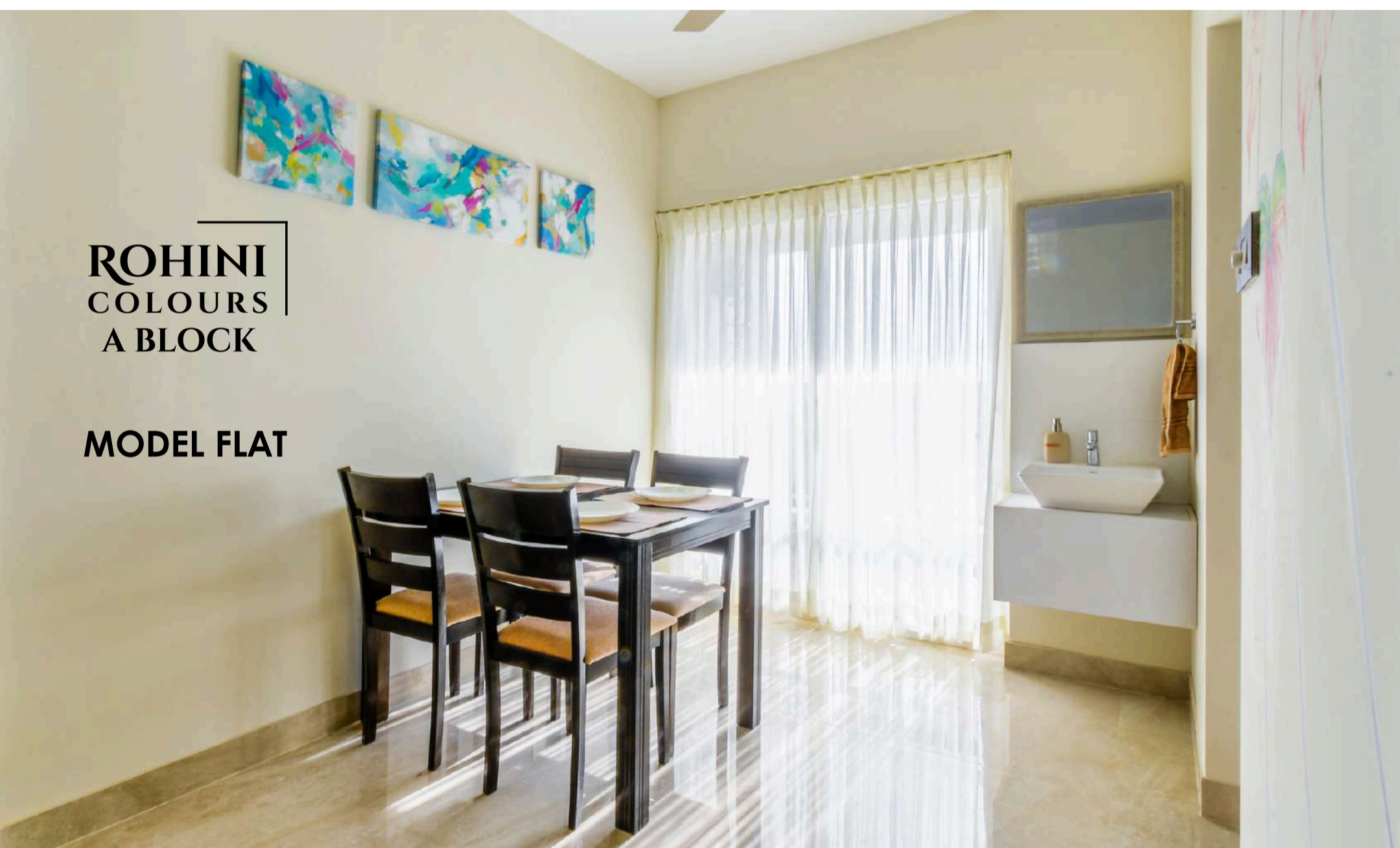
Rohini Colours 'A' Block is now a thriving community with 100% handover completed. Delivered on time and fully occupied, it stands as a shining example of Rohini Housing's commitment to quality and trust.

With 'B' Block, we're ready to build on that legacy and welcome many more happy homeowners.

*Quality Homes
at
Affordable
Prices*

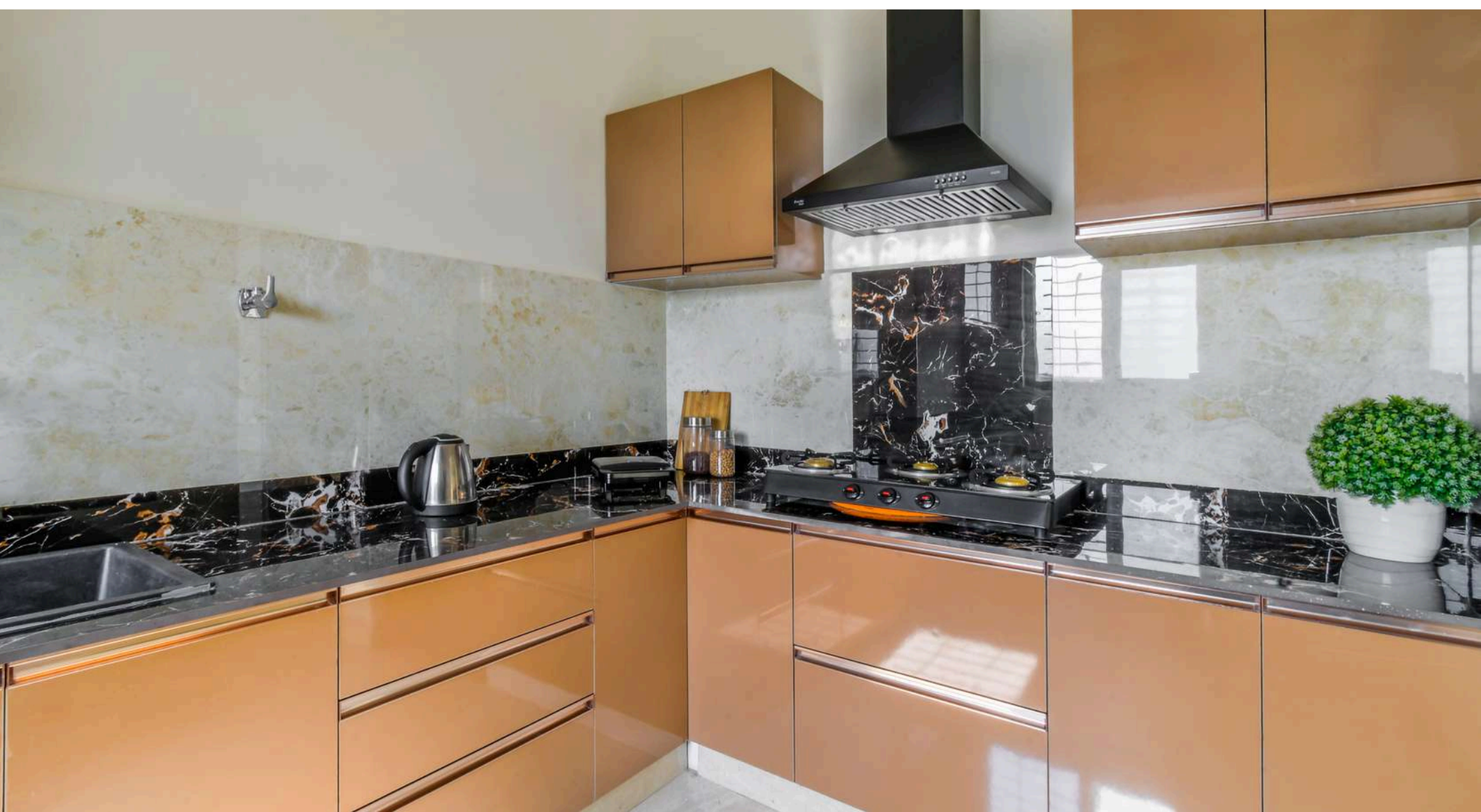
**STEP INSIDE OUR MODEL FLAT TO GET A
GLIMPSE OF YOUR DREAM HOME !**





ROHINI
COLOURS
A BLOCK

MODEL FLAT







CONTACT

99655 50661

99655 60661

**TO BOOK &
CUSTOMIZE YOUR
HOME INTERIOR**

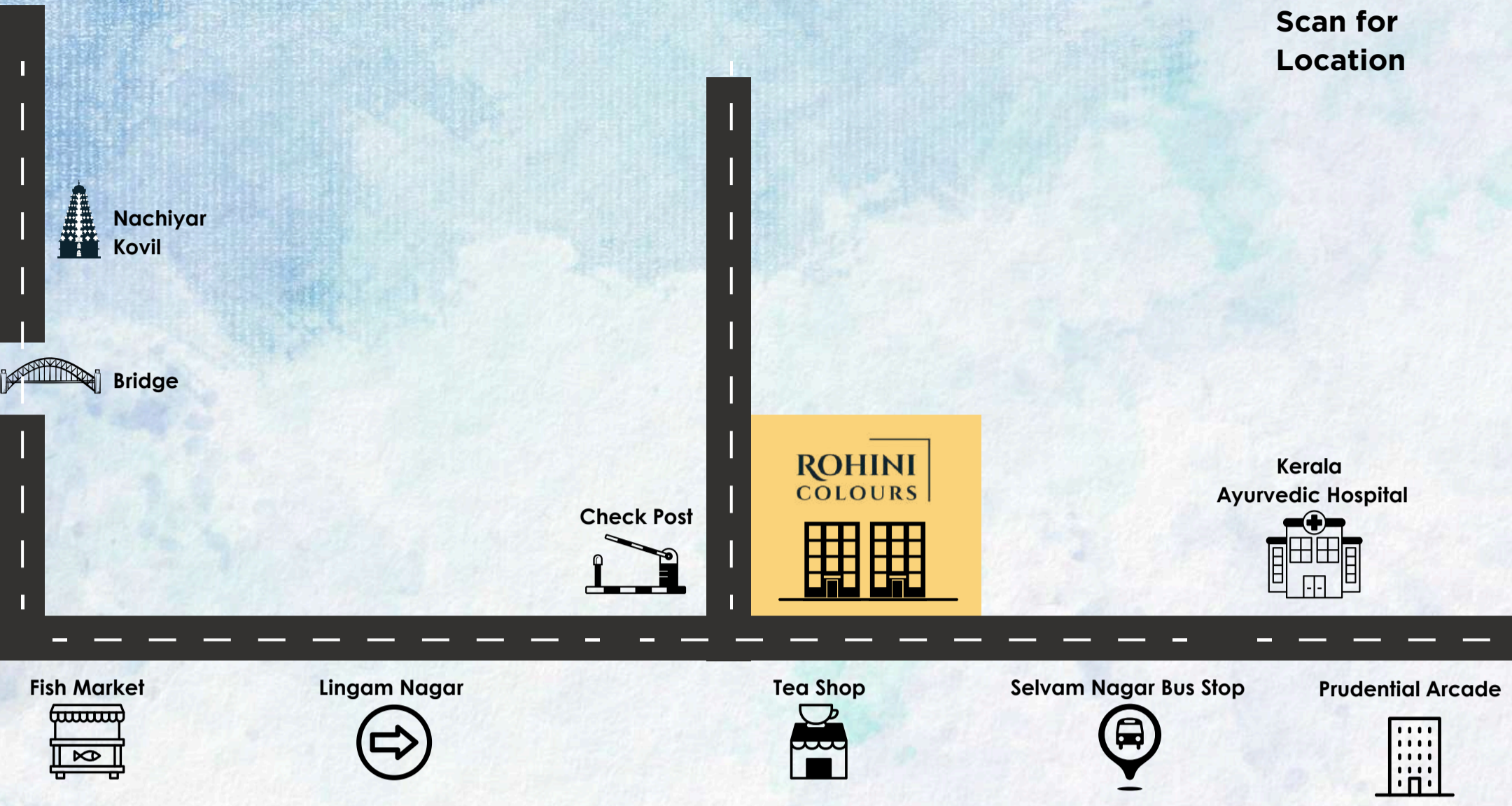


SITE LOCATION MAP

*NOT TO SCALE



Scan for
Location



At Rohini Housing, we collaborate with top architects and structural consultants to deliver homes built with excellence, safety and lasting quality.

Promoter

Er. M. ANAND

B.E, M.B.A

Architect



**SHANMUGAM
ASSOCIATES**

**Structural
Engineer**

Er. Ganesan

G struds - Structural Engineering
Consultancy Centre

OUR OTHER ONGOING PROJECTS



Rohini Housing, synonymous with excellence, invites you to experience modern living in Trichy.



📍 WORAIYUR

ROHINI
RAMJI
RESIDENCE



📍 ANNA NAGAR,
THENNUR

ROHINI
BLISS



📍 SANGILIYANDAPURAM

ROHINI
NAKSHATRA



📍 THIRUVANAIVKOVIL

ROHINI
PLATINA

ROHINI HOUSING

since 1987



99655 50661, 99655 60661



sales@rohinihousing.com



www.rohinihousing.com



Sales Office: 1st Floor, No 4, 6th Cross, Salai Rd, Tiruchirappalli - 18

Corporate Office : C 11, 1st Floor, 3rd Cross, Western Extension Thillai Nagar, Tiruchirappalli - 18

Member of
CREDAI

The information contained herein is subjected to change as maybe required by the authorities. This cannot form part of an offer or contact. While every reasonable care has been taken in providing this information the owner or their agents cannot be held responsible for any inaccuracies. The promoters reserve their rights to make alterations, additions and amendments as may be necessary from time to time. The Elevation shown is an artist's impression and for reference only. Terms & Conditions Apply *